

# Smart ID Card Reader Installation/update Steps

ePMI Enrolment - EPMI - eHR

https://apps.uat.ehr.gov.hk/group/epmi/ehr-enrolment#All%20in%20One%20-%20Registration%20/%20Activation%20/%20Sharing%20Consent

Administration Information

LIV UAT AA Logout


eHR Registration System

HCR Management Record Info Update Sharing Consent Management PPI/SCHSA Stage Reporting Utilities 醫健通eHealth App

(version 1.5.98 built on 06-May-2025)

All in One - Registration / Activation / Sharing Consent

### Smart ID




The HKID card reading software is out of date, please update.  
(Please contact your local IT if you fail to update by yourself. Enquiry: 34676230)

**Update**

### Manual Input

Fill in the information



HKIC No. ( )

ID Doc Type Document Type Document No.

Surname Given Name Single Name

DOB

Sex

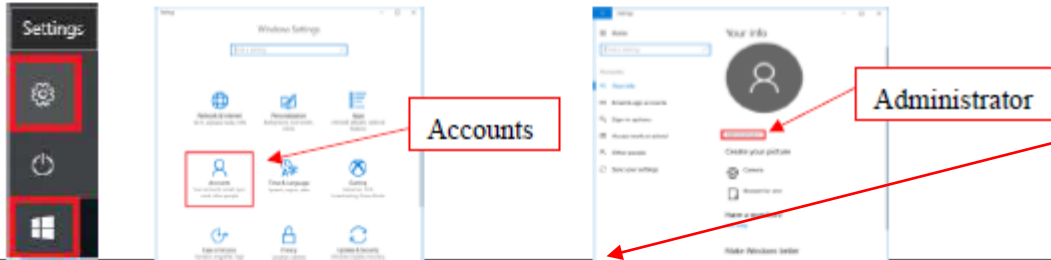
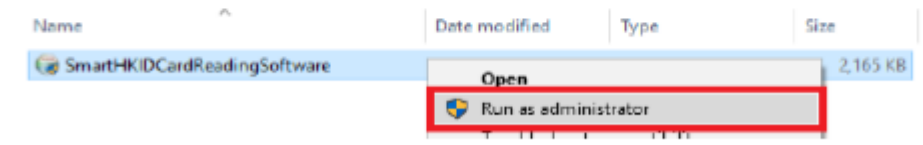
**Next**

Click the update button to open the user guide

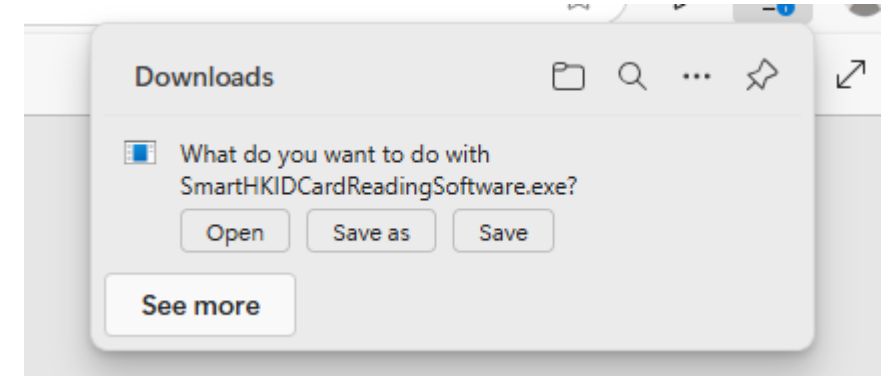
# Smart ID Card Reader Installation/update Steps

## User Guide for Using Smart HKID Card Reading Software for the Electronic Health Record Sharing System (eHRSS) and eHealth System (eHS) – September 2020

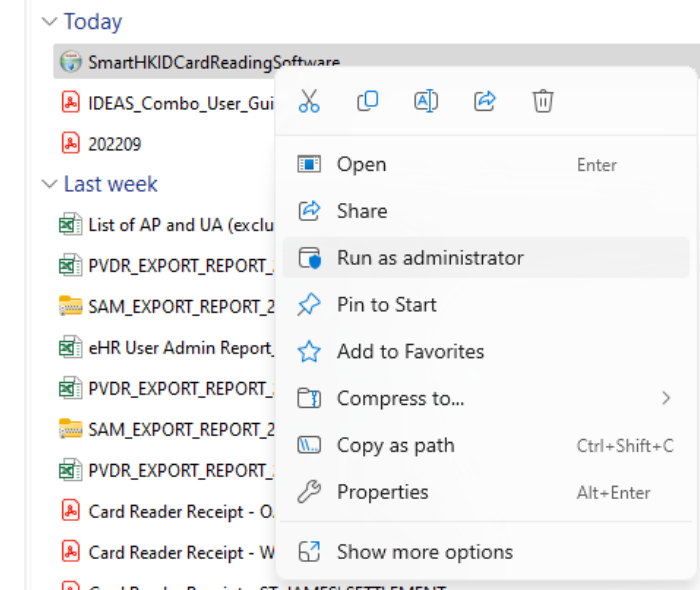
### Installation for Windows

Steps	Procedures
1	<p>Click on &lt;Windows Menu&gt; → &lt;Windows Settings&gt; → &lt;Accounts&gt; → Ensure that Administrator right is granted to your account</p>  <p>The screenshots show the navigation path: Windows Menu (bottom left), Windows Settings (top left), Accounts (middle left), and the Administrator settings page (right) where the Administrator role is confirmed.</p>
2	<p>Log onto eHRSS Landing Page → Click on <a href="#">here</a> to download the Smart HKID Card Reading Software installer to "C:\\" (recommended browser: Internet Explorer) → Right-click on the Smart HKID Card Reading Software installer → Select &lt;Run as administrator&gt;</p>  <p>The screenshot shows a file named 'SmartHKIDCardReadingSoftware' (2,165 KB) in a file explorer. A right-click context menu is open, and the 'Run as administrator' option is highlighted with a red box.</p> <p>Select &lt;English&gt; → Click on &lt;OK&gt; → &lt;Install&gt; → &lt;Finish&gt;</p>

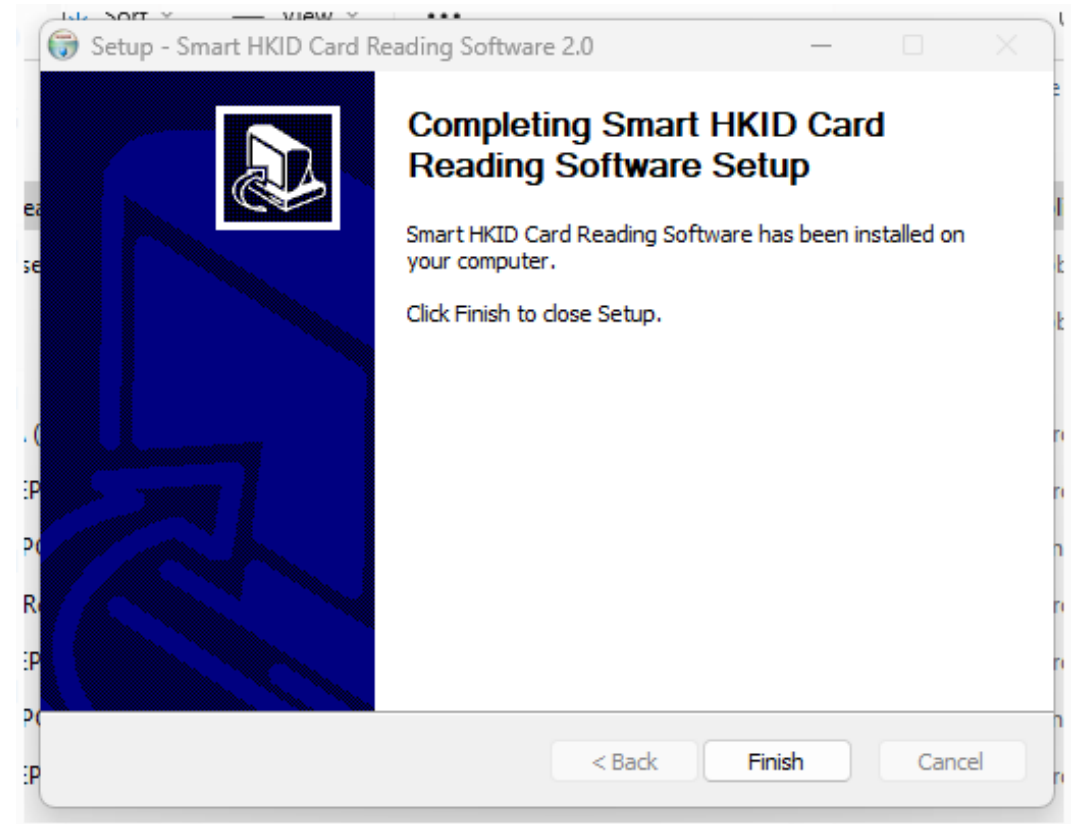
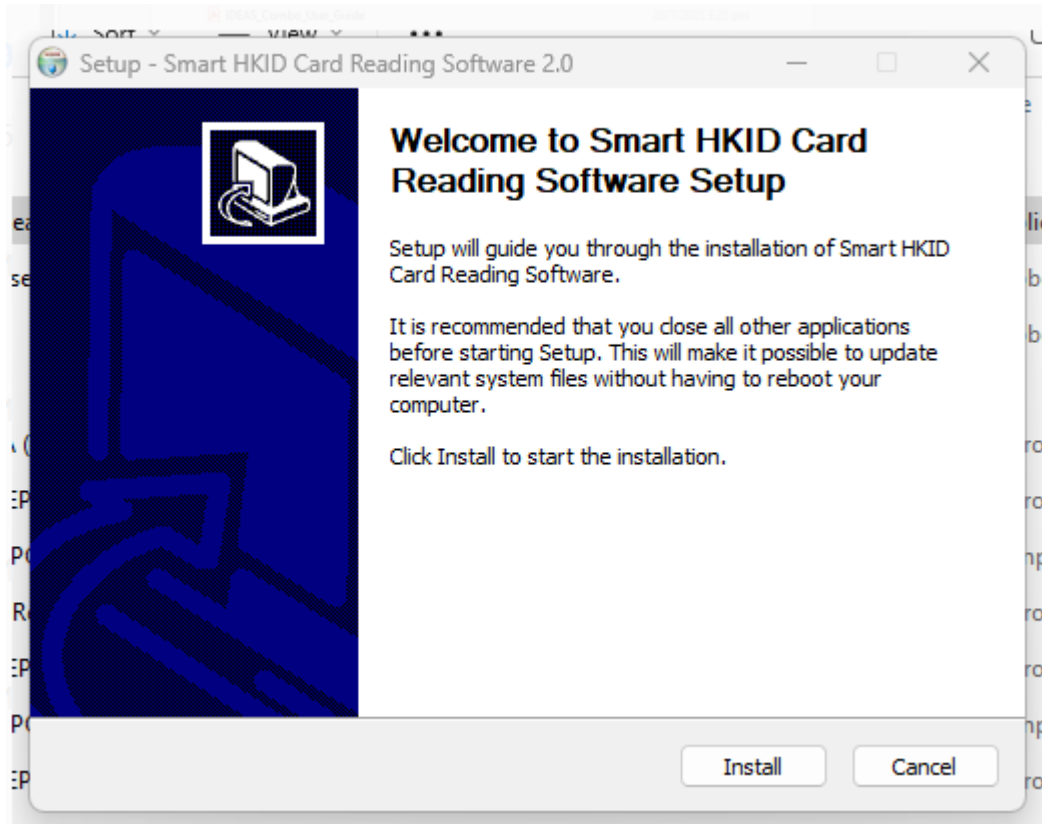
Follow the steps of the user guide



Click the button to download the software



# Smart ID Card Reader Installation/update Steps



# Smart ID Card Reader Installation/update Steps

The screenshot displays the eHR Registration System interface. At the top, there are navigation tabs for 'Administration' and 'Information'. The user 'LOK TUNG CAMBIE CHAN' is logged in. The main menu includes 'HCR Management', 'Record Info Update', 'Sharing Consent Management', 'PPI/SCHSA Stage', 'Reporting', 'Utilities', and '醫健通eHealth App'. The version is '1.5.98 built on 06-May-2025'. The current page is 'All in One - Registration / Activation / Sharing Consent'.

The interface is divided into two main sections:

- Smart ID:** This section is titled 'Smart ID' and 'Insert HCR's HKID Card'. It features an illustration of a 'Card Reader' with a card being inserted, labeled 'Chip facing up'. Below this, there is a 'Select Sex' section with two options: 'Male' (男) and 'Female' (女), each with a 'Start' button.
- Manual Input:** This section is titled 'Manual Input' and 'Fill in the information'. It features an illustration of hands typing on a keyboard. Below this, there are several input fields: 'HKOC No.', 'ID Doc Type', 'Document Type', 'Document No.', 'Surname', 'Given Name', 'DOB', and 'Sex'. A 'Next' button is located at the bottom of this section.

Can see the above illustration and buttons  
if successfully installed